

# LF 125 KHz Handheld RFID Writer

## Introduction :

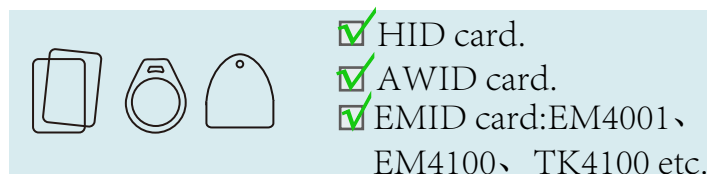
The 125KHz handheld duplicator is a device used to produce the the same card number as the mother card.It uses a mini handheld shell, which is ergonomic and easy to carry.

## Physical picture :



## Parameters:

Frequency	125 KHz
Power	DC : 2.5 - 3.1 V
Distance	10mm - 30mm
Size	71*117*31mm
Multi-type reading	AWID,EM4100,EM4200,TK4100, TK4168,TK4100-D, HID( H10301, H10302,H10304,H10306)
Multi-type writing	T5577, SIC7888, CET5200, CET5577, EN4205, EN4305, EL8265, EL8268



Keep the device operating DC voltage between 2.5 and 3.1 V.

## Remarks :

One beep stands for working on the EMID card.

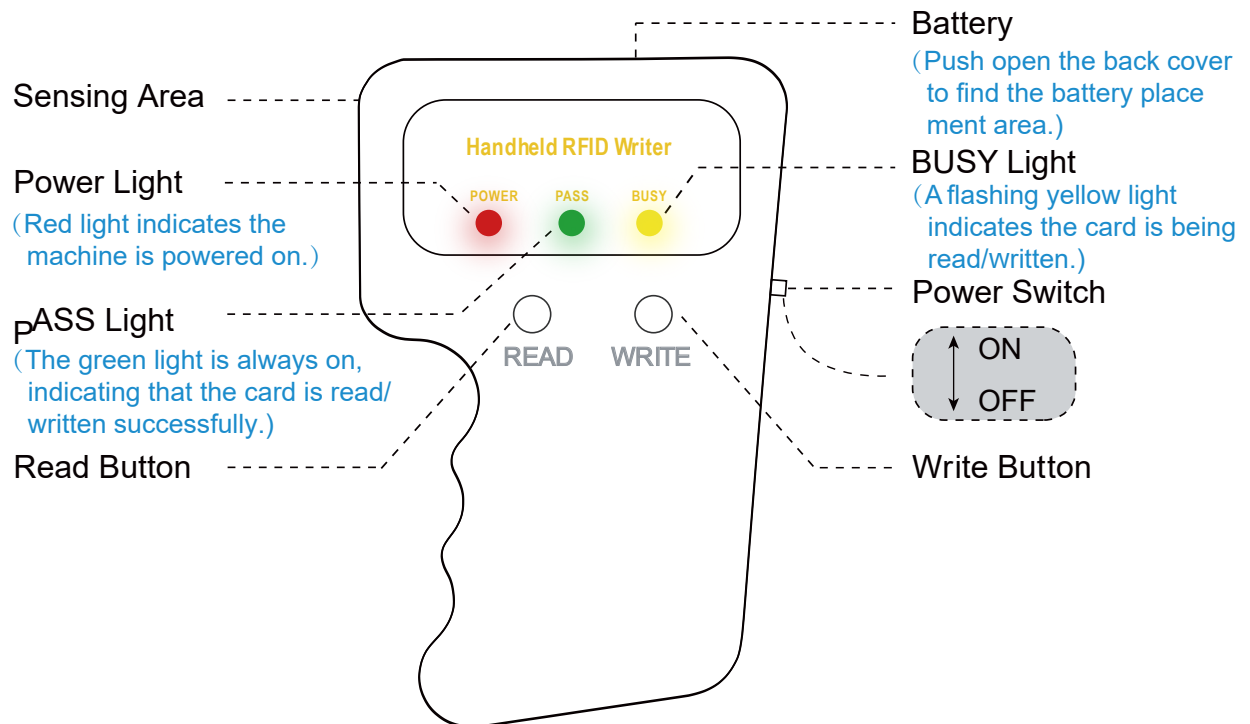
Twice beep stands for working on the HID , AWID card.

## Features:

There are only "READ" and "WRITE" two buttons,that's easy for operation.

Power: 2 \* 1.5 V AAA batteries (No battery inside the device, you have to prepare 2 batteries by your side).

## Operations:



Remove the battery cover and install **2 \* 1.5 V AAA** alkaline batteries.  
(Note: The device operating DC voltage must be between 2.5 and 3.1V).

Push the switch on the right side of the device to turn on the device. The red light is on, the green and yellow lights flash briefly, and the device emits two beeps. If the light does not light up, reinstall the battery and start the device until it works.

Place the sensing area on the left side of the device close to the original card, press the "READ" button, the green light will light up after the yellow light flashes, and a beep will sound, indicating that the card reading is successful. One beep indicates an EMID card, Two beeps indicate an AWID card. If the device cannot read by pressing the "READ" button, press the "WRITE" button and hear a few beeps, then the card reading is wrong.

After the card is read successfully, replace the original card with a writable EMID card or AWID card, press the "WRITE" button, the yellow light flashes to indicate that the card is being written, then the yellow light goes out, the green light comes on, and one or two prompt sounds are issued, indicating that the card is written successfully.

## FAQ:

I use two batteries but the machine doesn't work, what's going on?

Hello, the operating voltage of this product is DC 2.5-3.1V, and it is recommended to use two new 1.5V alkaline batteries.

What frequency does this machine operate at and is it compatible with my card?

Hello, the operating frequency of this machine is 125 KHz, and it supports reading and writing EMID, HID, and AWID cards. Before purchasing, please confirm that the machine has the same frequency as the card you need to back up.

Can it backup cards with encrypted data?

No, it cannot back up cards with encrypted data, the machine can only read and write unencrypted 125KHz EMID cards and key fobs.

Can it read multiple types of cards? What are they?

Yes, The machine supports reading multiple types of cards, such as: TK4100, EM4100, EM4200, TK4100-D, TK4168, HID ProxCard II, AWID and parsdox.

The device works at 125 KHz? Is it compatible with all 125 KHz cards?

The device works at 125 KHz, but the device is not compatible with all 125 KHz cards. It can read and write EMID cards at close range, such as EMID, HID, AWID, and paradox.

What is the maximum read/write distance?

The best reading/writing effect is when the read/write distance is between 0 ~1.2 inches.

Warm reminder: the card backup is not a percentage success. If the read or write fails, you can try to replace the battery (**two new 1.5V batteries**), adjust the position of the card reader, and contact us. We will help you and assist you in solving the problem.

**Note: Please use two new 1.5V alkaline batteries.**  
**Used 1.5V batteries may cause the machine to not work.**  
**Use 1.2V batteries and the machine will not work.**

## Detailed parameters:

PARAMETER		SPEC			UNIT
		MIN	TYP	MAX	
Supply Voltage		2.5	3.0	3.1	V
Active Current		25	35	85	mA
Ambient Temperature	Operating	32		158	°F
	Storage	-40		212	°F
Relative Humidity		5 - 95% , non-condensing			

Note:Stresses beyond the absolute maximum may result in immediate failure or reduced failure or reduced reliability.These are stress values and device operation should be within recommend values.

**NOTICE:** The XIXEI®Copier is intended as a tool to facilitate the storage of multiple Radio Frequency Identification (RFID) keys for later recall and use. We do not guarantee that the user of the product will experience any higher level of security. The user of this product uses it at his or her own risk. Therefore, the user of this product forever releases Network Security Technology Co., Ltd., its shareholders, successors and assigns, agents, attorneys and representatives from any and all claims, demands, debts, liabilities, actions, causes of action, proceedings, contract disputes, obligations and judgments, whether at law or in equity, arising out of or related to the use and operation of the The XIXEI®RFID Copier.